



BUTTERFLY FEEDER

Support your local environment and create a butterfly friendly area in your garden or communal area.

What you need

- A bamboo cane
- A recycled bottle top
- Some recycled wrapping paper and laminator
- A tack/drawing pin or similar
- Cotton wool
- Sugar and water syrup
- BluTak

TOP UP THE
FEEDER REGULARLY
TO ATTRACT MORE
BUTTERFLIES



30 min



all ages

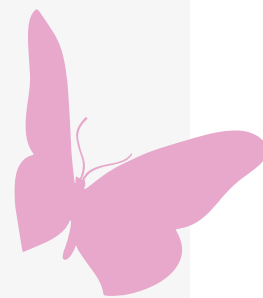
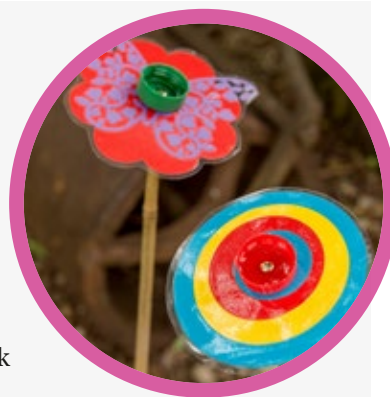


outdoor fun



Instructions

1. Cut the wrapping paper in to a large flower shape and laminate.
2. Place the bottle top in the middle of the laminated flower shape and push the tack through both the bottle top and the flower shape so the point of the tack comes through.
3. Place a small ball of BluTak at one end of the bamboo cane to keep the top from falling off.
4. Push the laminated shape and bottle top point first into the BluTak.
5. Place in the garden in full sun, add a small amount of cotton wool and drip some of the sugar syrup onto the cotton wool.
6. Sit back and enjoy butterflies visiting.
7. Top up the feeder regularly with sugar syrup to invite more butterflies to your feeder.



GET SOCIAL:

We're a social bunch here at WWF, so we'd love to hear from you on social media. Please share your 'green' stories and activities with us on Facebook, Twitter or Instagram using the hashtag **#GreenAmbassadors @wwf_uk**

Learn more about our work and how you can get involved:
wwf.org.uk/youngpeople



For a future where people and nature thrive | wwf.org.uk

© 1986 panda symbol and © "WWF" Registered Trademark of WWF. WWF-UK registered charity (1081247) and in Scotland (SC039593). A company limited by guarantee (4016725)